

Selection and Evaluation of Human Recombinant Antibodies against ErbB2 Antigen for Breast Cancer Immunotherapy

Elham Nadimi,¹ and Foroogh Nejatollahi^{1,2,*}

¹Recombinant Antibody Laboratory, Department of Immunology, Shiraz University of Medical Sciences, Shiraz, IR Iran

²Shiraz HIV/AIDS Research Center, Institute of Health, Shiraz University of Medical Sciences, Shiraz, IR Iran

*Corresponding author: Foroogh Nejatollahi, Shiraz HIV/AIDS Research Center, Institute of Health, Shiraz University of Medical Sciences, Shiraz, IR Iran. E-mail: nejatollaf@sums.ac.ir

Received 2017 January 31; Revised 2017 February 28; Accepted 2017 March 06.

Abstract

Background: Breast cancer is the most common cause of cancer-related death in women worldwide. ErbB2/HER2 breast cancer accounts for 25% - 30% of all cases of breast cancer. Approved anti-ErbB2 monoclonal antibodies, trastuzumab and pertuzumab, are currently used for the treatment of ErbB-positive breast cancer, although their clinical use is limited due to their immunogenicity. Human recombinant single-chain antibodies, which are produced by antibody engineering technologies, are new and effective antibodies in cancer immunotherapy.

Objectives: To select specific single-chain variable fragments (scFvs) against 2 immunodominant ErbB2 epitopes, including trastuzumab and pertuzumab binding sites, and to evaluate their reactivity and specificity against ErbB2 epitopes.

Methods: *Escherichia coli* bacteria, containing a phagemid with a scFv insert segment, were used to select specific high-affinity scFvs against 2 ErbB2 epitopes, using the panning process. Polymerase chain reaction (PCR) and DNA fingerprinting were performed on the obtained clones to select the positive ones and isolate the common patterns. The selected clones were evaluated via phage Elisa in terms of reactivity and specificity to epitopes.

Results: Single-chain antibodies, scFvI and scFvII, which are ErbB2-specific with 40% and 45% frequencies, were selected against epitopes I and II, respectively. The results of phage ELISA demonstrated a significant difference in the optical density (OD) of scFvs in reaction with the related peptides and non-peptide wells. ODs of 0.65 and 0.71 were obtained for scFvI and scFvII reactions with the corresponding peptides, whereas the ODs of non-peptide wells were 0.1 and 0.13, respectively.

Conclusions: Targeted cancer therapy, which acts on a specific molecule in cancer cells, minimizes the side effects of immunotherapy. Due to the unique properties of scFvs, these antibodies have been used in targeted therapy of several cancers. In this study, 2 specific scFvs were selected against 2 ErbB2 epitopes, which contained trastuzumab and pertuzumab binding sites. The results of the panning process demonstrated the selection of 2 specific scFvs (with frequencies of 40% and 45%, respectively), which significantly reacted with the corresponding epitopes in phage ELISA assay. These small, high-affinity, human antibodies, which were selected against regions containing the binding sites of 2 food and drug administration (FDA)-approved monoclonal antibodies for breast cancer immunotherapy, have the potential to be considered for breast cancer targeted therapy. However, in vitro and in vivo tests should be performed to evaluate the antitumor effects of these scFvs.

Keywords: Breast Cancer, ErbB2, ScFv Antibodies, Targeted Therapy

1. Background

Breast cancer is the most common cause of cancer-related death in women worldwide and accounts for more than 23% of new cases of cancer each year. Numerous strategies are currently used for the treatment of cancer, including chemotherapy and radiotherapy (1). However, as these methods target both normal and cancer cells, they cause various side effects.

In recent decades, targeted therapy has attracted the attention of scientists. Specific monoclonal antibodies have been developed against different targets in breast cancer cells (2). One of the best targets is the human epidermal growth factor receptor 2, ErbB2/HER2. ErbB2 is a

member of the epidermal growth factor family of receptor tyrosine kinases, involved in a variety of malignancies (3), such as gastric, colorectal, ovarian, endometrial, pancreatic, and breast cancers (4, 5). Moreover, it plays an important role in the differentiation, proliferation, and migration of cancer cells (1).

Several studies have shown the relationship between amplification and overexpression of ErbB2 and progression of breast cancer (6-8). Trastuzumab and pertuzumab, 2 Food and Drug Administration (FDA)-approved monoclonal antibodies against ErbB2, have shown some benefits in the treatment of breast cancer (9, 10). However, they have a limited clinical use, which is mainly due to their immunogenicity (11, 12).

Some limitations of whole antibodies can be overcome by reducing antibodies to their minimal binding domains. Advances in antibody engineering have provided small single-chain variable-fragment (scFv) antibodies, which are produced by the association between heavy-chain variable (VH) and light-chain variable (VL) domains through a synthetic peptide, (GGGGS)₃ (13-15).

ScFvs with a molecular mass of 26-27 kDa have several advantages, including human origin, small size, strong penetrating power, high affinity, simple specificity, and also ease of mass production. These antibodies also show great potential for the diagnosis and treatment of a number of diseases, including prostate, pancreas, melanoma, and breast cancers (16-18).

2. Objectives

In this study, we aimed to select specific human recombinant single-chain antibodies against 2 ErbB epitopes and to evaluate the reactivity of the selected scFvs through phage enzyme-linked immunosorbent assay (ELISA).

3. Methods

3.1. Phage Rescue

A recombinant scFv library was used for producing the phage display library of scFvs (19). *Escheria coli* bacteria, containing a phagemid with an insert segment (obtained from the human recombinant antibody laboratory at the Department of Immunology), were grown overnight. All grown cells were scraped in 50 mL of 2TY broth and incubated at 37°C for 1 hour. After reaching an optical density (OD) of 0.6 - 1, M13KO7 helper phage (New England Biolabs Inc., USA) was added to the medium, mixed, and incubated for 1 hour.

The *E. coli* suspension was transferred to a 50 mL tube and centrifuged. The bacterial pellet was transferred to 50 mL of 2TY broth, containing both ampicillin and kanamycin (100 and 50 µg/mL, respectively), and was cultured overnight with shaking at 30°C. The culture was centrifuged, and the supernatant containing the phage was filtered in order to remove bacterial particles; finally, it was stored at a temperature of 4°C.

3.2. Selection of Specific scFvs against HER2 Epitopes

Immunotubes (Nunc, Roskilde, Denmark) were coated with 10 µg/mL of epitopes in phosphate buffered saline (PBS) and incubated overnight at 4°C. Blocking solution (10% fetal calf serum and 2% skimmed milk in PBS) was added to the tubes and incubated at 37°C for 2 hours. The tube was washed 4 times with PBS plus Tween 20 (PBST) and

4 times with PBS. Then, 1011 pfu/mL of the rescued phages, diluted in blocking solution, was added and incubated at room temperature for 1 hour.

The log-phase *E. coli* TG1 was added to the immune tube and incubated for 1 hour at 37°C to allow cell infection by phage. The infected *E. coli* TG1 was centrifuged, the supernatant was removed, and the cell pellet was cultured on a 2TY agar plate. Helper phage M13KO7 was used to rescue the phage-transformed *E. coli*. Then, 4 rounds of panning were carried out to select specific scFvs against 2 ErbB2 epitopes.

3.3. PCR and DNA Fingerprinting of the Selected Clones

Polymerase chain reaction (PCR) and DNA fingerprinting of randomly selected clones were carried out after the fourth round of panning. Each PCR product was digested with MvaI restriction endonuclease (Roche Diagnostics GmbH, Mannheim, Germany) for 2 hours at 37°C. The digested product was run on 2% Agarose gel.

3.4. Phage ELISA

Antigen-specific phage clones were identified by phage ELISA. ErbB2 peptide, as an antigen, was coated in an ELISA plate well in triplicate. Then, the selected phage antibody was added. After washing with PBS, anti-Fd antibody (Sigma, Germany) was poured and incubated at 25°C for 1 hour. Following washing, anti-rabbit horseradish peroxidase (HRP) conjugated antibodies (Sigma, Germany) were added to each well and incubated at room temperature for 1.5 hours.

TMB peroxidase substrate (Thermo Scientific, USA) was added after washing the wells. ODs were determined after 10 minutes, using an ELISA reader (BP800; Biohit, USA). On the other hand, the unrelated peptide, epitope of prostate stem cell antigen (TARIRAVGLLTVISK), unrelated scFv (anti-HSV-gB scFv), M13KO7, and non-peptide wells were considered as the controls.

3.5. Statistical Analysis

Data were analyzed using one-way analysis of variance (ANOVA) test to compare the mean absorbance values between the related and unrelated peptides for the 2 selected scFvs. The data are presented as mean ± standard deviation. P-value less than 0.05 was considered statistically significant.

4. Results

4.1. PCR and DNA Fingerprinting

Figures 1 and 2 show PCR and DNA fingerprinting of clones after the panning process against peptide I (A) and peptide II (B), respectively. The 950-bp band (VH-linker-VL)

was obtained for all the clones (Figure 1). One dominant fingerprinting pattern was obtained against each peptide: pattern A for scFvI (lanes 5, 7, 10, 13, 14, 17, 19, and 20) with a frequency of 40% (Figure 2A) and pattern B for scFvII (lanes 1, 8, 13, 15, 16, 17, 18, 19, and 20) with a frequency of 45%. One clone from each pattern was selected for further evaluation.

4.2. Phage ELISA

Phage ELISA was used to demonstrate the specific binding of the selected scFv antibodies to the corresponding peptide. ANOVA test showed a significant difference in the average absorbance between the well coated with the corresponding peptide and the well containing no peptides for the selected scFvs, ie, scFvI and scFvII (Figures 3 and 4). ODs of 0.65 ± 0.042 and 0.71 ± 0.058 were obtained for scFvI and scFvII reactions with the corresponding peptide, whereas the ODs of non-peptide wells were 0.1 ± 0.042 and 0.13 ± 0.058 , respectively (Table 1).

Table 1. The Average ODs of scFvI and scFvII in Reaction with the Related Peptide, Unrelated Peptide, Unrelated scFv, M13KO7, and Non-Peptide Well in Phage ELISA

	OD \pm SD of scFvI	OD \pm SD of scFvII
Related peptide	0.65 ± 0.042	0.71 ± 0.058
Unrelated peptide	0.19 ± 0.069	0.36 ± 0.055
Unrelated scFv	0.32 ± 0.093	0.25 ± 0.057
M13KO7	0.17 ± 0.044	0.19 ± 0.045
No peptide	0.1 ± 0.042	0.13 ± 0.058

5. Discussion

Targeted cancer therapy, which acts on receptors over-expressed on the surface of cancer cells, is a new field of immunotherapy studies. Identification of proper targets to suppress cell growth and survival is an important step in this strategy (20). Targeted cancer therapies, approved by FDA, are used to treat cancer. Some of these approaches are presented in clinical trials and some are in the preclinical stage. As this type of therapy acts on a specific target, especially cancer cells, fewer or even no normal cells are affected (21, 22).

Breast cancer is a heterogeneous disease with several types. One of the most common types of breast cancer is ErBb2/HER2-positive breast cancer, which accounts for 25% - 30% of all cases of breast cancer (23). ErBb2 protein is expressed at high levels on the surface of ErBb2-positive breast cancer cells. ErBb2 homo- and heterodimerization with other ErBb family members promote cancer transformation through activation of the PI3K pathway (24).

Numerous targeted therapies have been introduced against ErBb2 (6, 25, 26). Although humanized monoclonal antibodies against ErBb2 (ie, trastuzumab and pertuzumab) are currently used for the treatment of breast cancer and interfere with ErBb2 dimerization, their disadvantages, including low tissue penetration, induction of human anti-mouse antibody (HAMA) reaction, and high production costs, encourage scientists to develop new methods for overcoming these drawbacks (27-29).

The recombinant scFvs opened new windows in cancer therapy due to their small size, human origin, and ability to penetrate solid cancers (16, 28, 29). A number of antitumor scFvs, alone or in conjugation with toxins, have been introduced in clinical trials. Bispecific, diabody, tribody, and tetrabody scFvs are other forms of scFvs, which have great potential for efficient tumor targeting (30, 31).

In the present study, we selected 2 specific anti-ErBb2 scFv antibodies against ErBb2 peptides (amino acids 557 - 567; ARHCLPCHPEC), which include the loop 1 of ErBb2 targeted by trastuzumab; this region is introduced as a proper site for anticancer immunotherapy (32, 33). The second peptide, used for the selection of scFvs, contained amino acids 377 - 392 (LPESFDGDPASNTAPL), as the first target of pertuzumab in the epitope; also, it is considered as a novel recombinant monoclonal antibody against ErBb2. Binding of antibodies to these epitopes blocks ErBb2 dimerization and inhibits transphosphorylation of tyrosine residues in the intracellular region of ErBb2, which leads to the inhibition of proliferation in ErBb2-expressing cells (34).

It has been shown that the target peptide, used in the selection of scFvs, plays the most important role in successful immunotargeting by scFvs (19, 35). A number of tumor markers and ErBb2 epitopes have been introduced for cancer immunotherapy (34). The epitope accessibility is one of the criteria affecting the binding and efficiency of antibodies. The 2 epitopes selected in this study were located in ErBb2 regions, which are accessible for antibody binding.

The results of the panning process demonstrated the selection of 2 specific scFvs, scFvI and scFvII, with frequencies of 40% and 45%, respectively. Specific scFvs with frequencies of 35% and 20%, respectively were selected against CTLA4 antigen, as a potential marker for targeted cancer therapy via panning a library against the CTLA4 epitope (36). In this regard, Mohammadi et al. (37) reported the selection of specific scFvs against a breast cancer tumor marker, MUC18, using the panning process, which led to the isolation of specific scFvs with a frequency of 40%. Overall, the panning process, which enriches the phage antibody, is an effective process for selecting high-affinity and high-specificity antibodies in targeted therapy.

The results of the panning process were confirmed by

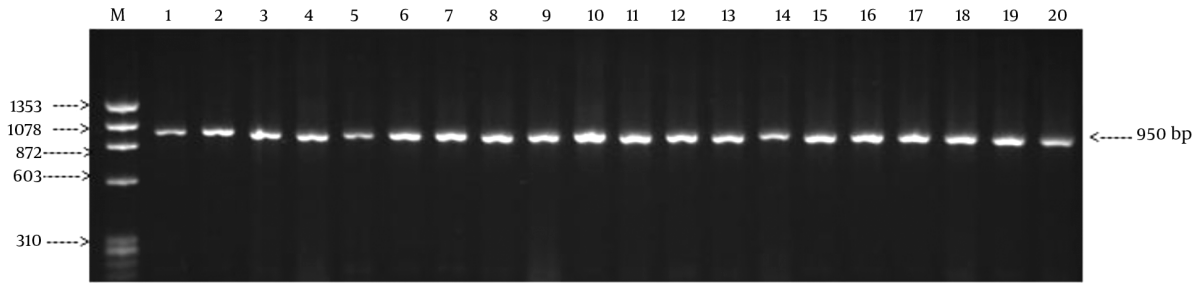
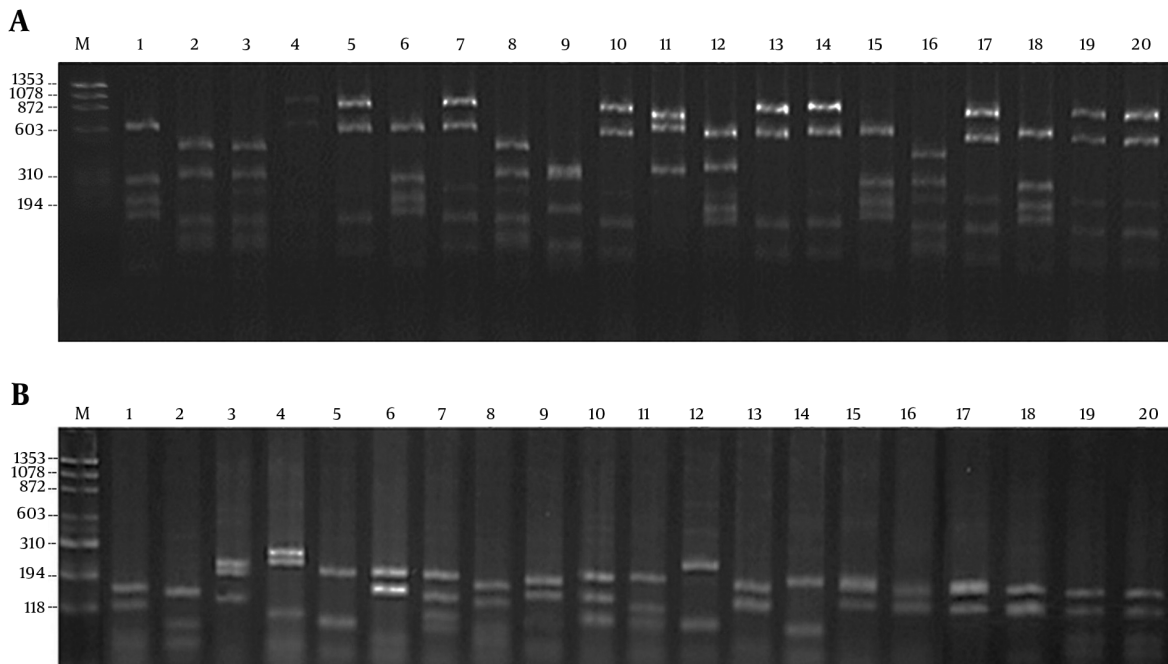


Figure 1. PCR of the Selected Clones after Panning (A 950-bp Band for 20 Examined Clones)

Figure 2. DNA Fingerprinting of the Selected Clones Against Peptide A, I and B, Peptide II



Each scFv showed 1 dominant pattern. The common pattern of A, scFvI (lanes 5, 7, 10, 13, 14, 17, 19, and 20) and B, the common pattern of scFvII (lanes 1, 8, 13, 15, 16, 17, 18, 19, and 20) are presented.

phage ELISA, which represents the reactivity and specificity of the selected scFvs. Phage ELISA results showed a significant difference in the average ODs obtained from the reaction of scFvs with the related peptides and non-peptide wells. Also, among other antigen and antibody controls, unrelated peptides, such as antigen control unrelated scFv and M13KO7 as the antibody control, showed significantly lower ODs, compared to the related peptides.

In this regard, Xia et al. showed the specificity of anti-CD133 scFv, using phage ELISA and confirmed the panning

results regarding the selection of library clones (38). Also, after the selection of a high-affinity scFv against VEGFR1, which is a receptor tyrosine kinase implicated in cancer pathogenesis, the reactivity and specificity of the phage antibody were evaluated in the phage ELISA test (39). The phage ELISA results represented the specificity of the anti-ErbB2 scFvs.

The human origin of these novel antibodies, which prevent HAMA reaction, is the unique property of these fully human antibodies and makes them desirable for breast

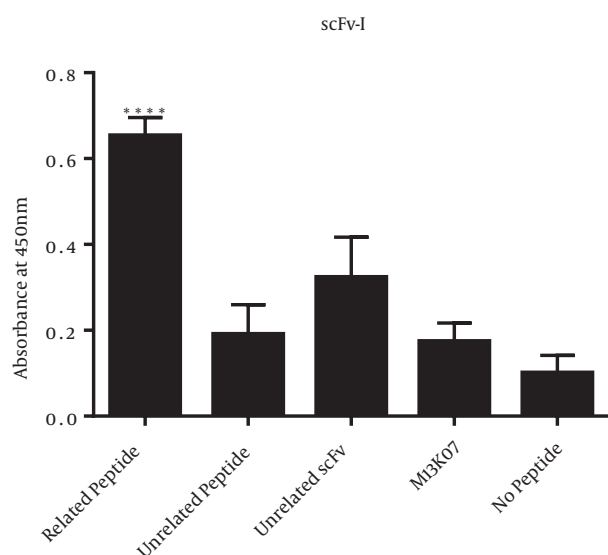


Figure 3. The ELISA Results of scFvI

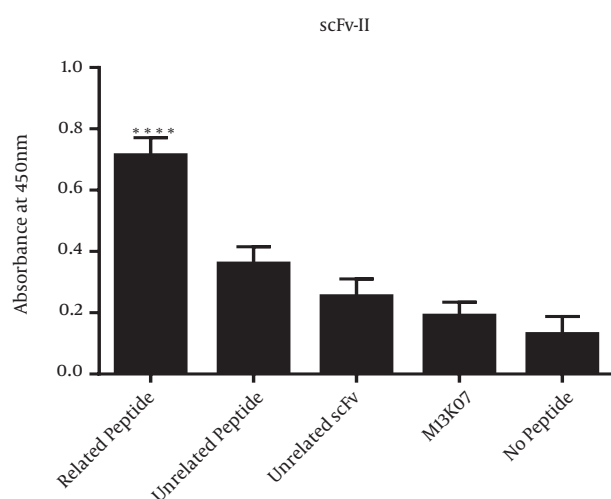


Figure 4. The ELISA Results of scFvII

cancer targeted therapy. The possibility of genetic manipulation is another feature, which facilitates the formation of fusion peptides with additional function to overcome tumor growth and proliferation more efficiently. Moreover, the small size and deep tissue penetration of specific anti-ErbB2 scFvs provide better immunotargeting results. However, further research is required to reveal the effects of the selected scFvs against breast cancer cells.

Acknowledgments

The authors acknowledge Shiraz University of Medical Sciences for the financial support (grant No., 9084).

Footnote

Conflicts of Interest: The authors declare no conflicts of interest.

References

- Luo LP, Han B, Yu XP, Chen XY, Zhou J, Chen W, et al. Anti-metastasis activity of black rice anthocyanins against breast cancer: analyses using an ErbB2 positive breast cancer cell line and tumoral xenograft model. *Asian Pac J Cancer Prev*. 2014;**15**(15):6219–25. [PubMed: 25124601].
- Geng X, Kong X, Hu H, Chen J, Yang F, Liang H, et al. Research and development of therapeutic mAbs: An analysis based on pipeline projects. *Hum Vaccin Immunother*. 2015;**11**(12):2769–76. doi: 10.1080/21645515.2015.1074362. [PubMed: 26211701].
- Eccles SA. The epidermal growth factor receptor/Erb-B/HER family in normal and malignant breast biology. *Int J Dev Biol*. 2011;**55**(7-9):685–96. doi: 10.1387/ijdb.113396se. [PubMed: 22161825].
- Moon SK, Park SR, Park A, Oh HM, Shin HJ, Jeon EJ, et al. Substitution of Heavy Complementarity Determining Region 3 (CDR-H3) Residues Can Synergistically Enhance Functional Activity of Antibody and Its Binding Affinity to HER2 Antigen. *Mol Cells*. 2016;**39**(3):217–28. doi: 10.14348/molcells.2016.2235. [PubMed: 26743905].
- English DP, Roque DM, Santin AD. HER2 expression beyond breast cancer: therapeutic implications for gynecologic malignancies. *Mol Diagn Ther*. 2013;**17**(2):85–99. doi: 10.1007/s40291-013-0024-9. [PubMed: 23529353].
- Nejatollahi F, Jaberipour M, Asgharpour M. Triple blockade of HER2 by a cocktail of anti-HER2 scFv antibodies induces high antiproliferative effects in breast cancer cells. *Tumour Biol*. 2014;**35**(8):787–95. doi: 10.1007/s13277-014-1854-8. [PubMed: 24828011].
- Kauraniemi P, Kuukasjarvi T, Sauter G, Kallioniemi A. Amplification of a 280-kilobase core region at the ERBB2 locus leads to activation of two hypothetical proteins in breast cancer. *Am J Pathol*. 2003;**163**(5):1979–84. doi: 10.1016/S0002-9440(10)63556-0. [PubMed: 14578197].
- Nejatollahi F, Asgharpour M, Jaberipour M. Down-regulation of vascular endothelial growth factor expression by anti-Her2/neu single chain antibodies. *Med Oncol*. 2012;**29**(1):378–83. doi: 10.1007/s12032-010-9796-5. [PubMed: 21267676].
- Dean L. Trastuzumab Therapy and ERBB2 (HER2) Genotype. ; 2015.
- Swain SM, Baselga J, Kim SB, Ro J, Semiglazov V, Campone M, et al. Pertuzumab, trastuzumab, and docetaxel in HER2-positive metastatic breast cancer. *N Engl J Med*. 2015;**372**(8):724–34. doi: 10.1056/NEJ-Moa1413513. [PubMed: 25693012].
- Boix-Perales H, Borregaard J, Jensen KB, Ersboll J, Galluzzo S, Giuliani R, et al. The European Medicines Agency Review of Pertuzumab for the treatment of adult patients with HER2-positive metastatic or locally recurrent unresectable breast cancer: summary of the scientific assessment of the committee for medicinal products for human use. *Oncologist*. 2014;**19**(7):766–73. doi: 10.1634/theoncologist.2013-0348. [PubMed: 24928613].
- Morita J, Tanaka M, Nomoto M, Matsuki S, Tsuru T, Matsuguma K, et al. Pharmacokinetic Bioequivalence, Safety, and Immunogenicity of DMB-3111, a Trastuzumab Biosimilar, and Trastuzumab in Healthy Japanese Adult Males: Results of a Randomized Trial. *BioDrugs*. 2016;**30**(1):17–25. doi: 10.1007/s40259-015-0153-2. [PubMed: 26691837].

13. Mohammadi M, Nejatollahi F. 3D structural modeling of neutralizing scFv against glycoprotein-D of HSV-1 and evaluation of antigen-antibody interactions by bioinformatic methods. *Int J Pharm Bio Sci.* 2014;**5**(4):835-47.
14. Lameris R, de Bruin RC, Schneiders FL, van Bergen en Henegouwen PM, Verheul HM, de Gruijl TD, et al. Bispecific antibody platforms for cancer immunotherapy. *Crit Rev Oncol Hematol.* 2014;**92**(3):153-65. doi: [10.1016/j.critrevonc.2014.08.003](https://doi.org/10.1016/j.critrevonc.2014.08.003). [PubMed: 25195094].
15. Moazen B, Ebrahimi E, Nejatollahi F. Single Chain Antibodies Against gp55 of Human Cytomegalovirus (HCMV) for Prophylaxis and Treatment of HCMV Infections. *Jundishapur J Microbiol.* 2016;**9**(3):ee16241. doi: [10.5812/ijjm.16241](https://doi.org/10.5812/ijjm.16241). [PubMed: 27217918].
16. Nejatollahi F, Ranjbar R, Younesi V, Asgharpour M. Dereglulation of HER2 downstream signaling in breast cancer cells by a cocktail of anti-HER2 scFvs. *Oncol Res.* 2013;**20**(8):333-40. doi: [10.3727/096504013X13657689382734](https://doi.org/10.3727/096504013X13657689382734). [PubMed: 23924853].
17. Younesi V, Nejatollahi F. Induction of anti-proliferative and apoptotic effects by anti-IL-25 receptor single chain antibodies in breast cancer cells. *Int Immunopharmacol.* 2014;**23**(2):624-32. doi: [10.1016/j.intimp.2014.10.015](https://doi.org/10.1016/j.intimp.2014.10.015). [PubMed: 25466271].
18. Mohammadi M, Nejatollahi F, Sakhteman A, Zarei N. Insilico analysis of three different tag polypeptides with dual roles in scFv antibodies. *J Theor Biol.* 2016;**402**:100-6. doi: [10.1016/j.jtbi.2016.04.016](https://doi.org/10.1016/j.jtbi.2016.04.016). [PubMed: 27113782].
19. Nejatollahi F, Malek-Hosseini Z, Mehrabani D. Development of single chain antibodies to P185 tumor antigen. *Iran Red Crescent Med J.* 2008;**2008**(4):298-302.
20. Farkona S, Diamandis EP, Blasutig IM. Cancer immunotherapy: the beginning of the end of cancer?. *BMC Med.* 2016;**14**:73. doi: [10.1186/s12916-016-0623-5](https://doi.org/10.1186/s12916-016-0623-5). [PubMed: 27151159].
21. Pardoll DM. The blockade of immune checkpoints in cancer immunotherapy. *Nat Rev Cancer.* 2012;**12**(4):252-64. doi: [10.1038/nrc3239](https://doi.org/10.1038/nrc3239). [PubMed: 22437870].
22. Dobbstein M, Moll U. Targeting tumour-supportive cellular machineries in anticancer drug development. *Nat Rev Drug Discov.* 2014;**13**(3):179-96. doi: [10.1038/nrd4201](https://doi.org/10.1038/nrd4201). [PubMed: 24577400].
23. Kim JS, Kim HA, Seong MK, Seol H, Oh JS, Kim EK, et al. STAT3-survivin signaling mediates a poor response to radiotherapy in HER2-positive breast cancers. *Oncotarget.* 2016;**7**(6):7055-65. doi: [10.18632/oncotarget.6855](https://doi.org/10.18632/oncotarget.6855). [PubMed: 26755645].
24. Moasser MM. The oncogene HER2: its signaling and transforming functions and its role in human cancer pathogenesis. *Oncogene.* 2007;**26**(45):6469-87. doi: [10.1038/sj.onc.1210477](https://doi.org/10.1038/sj.onc.1210477). [PubMed: 17471238].
25. Albanell J, Codony J, Rovira A, Mellado B, Gascon P. Mechanism of action of anti-HER2 monoclonal antibodies: scientific update on trastuzumab and 2C4. *Adv Exp Med Biol.* 2003;**532**:253-68. [PubMed: 12908564].
26. Le XF, McWatters A, Wiener J, Wu JY, Mills GB, Bast RJ. Anti-HER2 antibody and heregulin suppress growth of HER2-overexpressing human breast cancer cells through different mechanisms. *Clin Cancer Res.* 2000;**6**(1):260-70. [PubMed: 10656457].
27. Nejatollahi F, Silakhori S, Moazen B. Isolation and Evaluation of Specific Human Recombinant Antibodies from a Phage Display Library against HER3 Cancer Signaling Antigen. *Middle East J Cancer.* 2014;**5**(3):137-44.
28. Ahmad ZA, Yeap SK, Ali AM, Ho WY, Alitheen NBM, Hamid M. scFv antibody: principles and clinical application. *Clin Dev Immunol.* 2012;**2012**.
29. Nejatollahi F, Abdi S, Asgharpour M. Antiproliferative and apoptotic effects of a specific antiprostata stem cell single chain antibody on human prostate cancer cells. *J Oncol.* 2013;**2013**.
30. Yao VJ, D'Angelo S, Butler KS, Theron C, Smith TL, Marchio S, et al. Ligand-targeted theranostic nanomedicines against cancer. *J Control Release.* 2016;**240**:267-86. doi: [10.1016/j.jconrel.2016.01.002](https://doi.org/10.1016/j.jconrel.2016.01.002). [PubMed: 26772878].
31. Goldenberg DM, Sharkey RM. Novel radiolabeled antibody conjugates. *Oncogene.* 2007;**26**(25):3734-44. doi: [10.1038/sj.onc.1210373](https://doi.org/10.1038/sj.onc.1210373). [PubMed: 17530026].
32. Cho HS, Mason K, Ramyar KX, Stanley AM, Gabelli SB, Denney DJ, et al. Structure of the extracellular region of HER2 alone and in complex with the Herceptin Fab. *Nature.* 2003;**421**(6924):756-60. doi: [10.1038/nature01392](https://doi.org/10.1038/nature01392). [PubMed: 12610629].
33. Khoury T, Mojica W, Hicks D, Starostik P, Ademuyiwa F, Janarthanan B, et al. ERBB2 juxtamembrane domain (trastuzumab binding site) gene mutation is a rare event in invasive breast cancers overexpressing the ERBB2 gene. *Mod Pathol.* 2011;**24**(8):1055-9. doi: [10.1038/modpathol.2011.64](https://doi.org/10.1038/modpathol.2011.64). [PubMed: 21499233].
34. Rockberg J, Schwenk JM, Uhlen M. Discovery of epitopes for targeting the human epidermal growth factor receptor 2 (HER2) with antibodies. *Mol Oncol.* 2009;**3**(3):238-47. doi: [10.1016/j.molonc.2009.01.003](https://doi.org/10.1016/j.molonc.2009.01.003). [PubMed: 19393584].
35. Ranjbar R, Nejatollahi F, Nedaei Ahmadi AS, Hafezi H, Safaie A. Expression of Vascular Endothelial Growth Factor (VEGF) and Epidermal Growth Factor Receptor (EGFR) in Patients With Serous Ovarian Carcinoma and Their Clinical Significance. *Iran J Cancer Prev.* 2015;**8**(4):ee3428. doi: [10.17795/ijcp-3428](https://doi.org/10.17795/ijcp-3428). [PubMed: 26478789].
36. Hosseinzadeh F, Mohammadi SS, Nejatollahi F. Production and Evaluation of Specific Single-Chain Antibodies against CTLA-4 for Cancer-Targeted Therapy. *Rep Biochem Mol Biol.* 2017;**6**(1):8-14.
37. Mohammadi M, Nejatollahi F, Ghasemi Y, Faraji SN. Anti-Metastatic and Anti-Invasion Effects of a Specific Anti-MUC18 scFv Antibody on Breast Cancer Cells. *Appl Biochem Biotechnol.* 2017;**181**(1):379-90. doi: [10.1007/s12010-016-2218-1](https://doi.org/10.1007/s12010-016-2218-1). [PubMed: 27565656].
38. Xia J, Zhang Y, Qian J, Zhu X, Zhang Y, Zhang J, et al. Isolation, identification and expression of specific human CD133 antibodies. *Sci Rep.* 2013;**3**:3320. doi: [10.1038/srep03320](https://doi.org/10.1038/srep03320). [PubMed: 24271022].
39. Wang X, Kim HY, Wahlberg B, Edwards WB. Selection and characterization of high affinity VEGFR1 antibodies from a novel human binary code scFv phage library. *Biochem Biophys Res.* 2015;**3**:169-74.